



QUATRO
DESIGN™

HABITAT
HOUSE



CLIENT April Group
ARCHITECT The World is Round
CONSTRUCTION MPA
LANDSCAPE ARCHITECT Arcadia
GRC Quatro Design
PHOTOGRAPHY Terence Chin

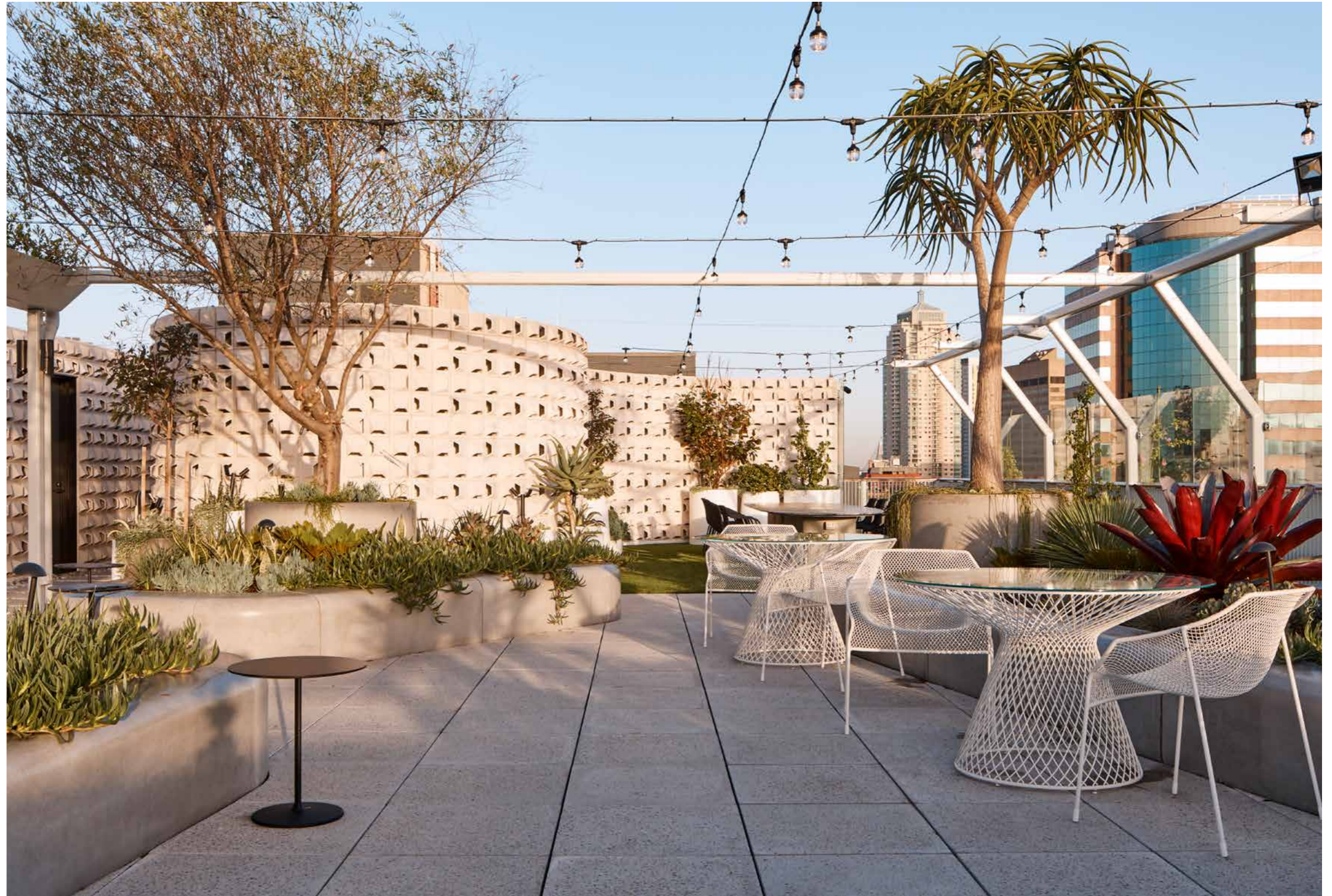
HABITAT HOUSE

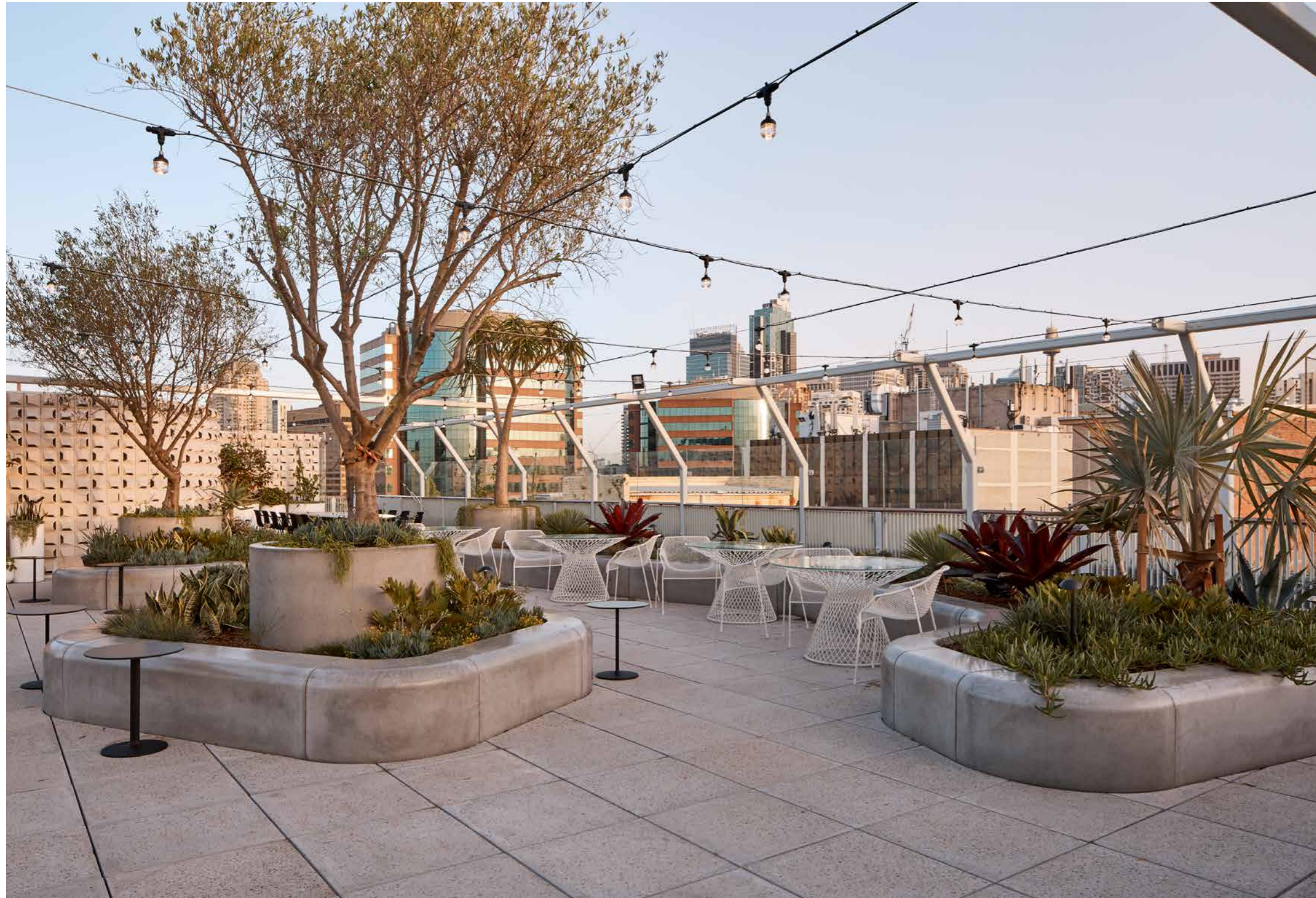
Demand for commercial properties in the thriving city fringe suburb of Surry Hills with its treelined streets and artistic feel has soared. Habitat House's high-end facilities combined with its natural light, creative and modern atmosphere as well as its convenient proximity to Central Railway Station and Sydney light rail has it set to become Surry Hills' leading commercial address.

Architecture firm The World is Round was engaged by April Group to reposition this 1960's former fashion warehouse as a premium offering, focussing on lifestyle, wellbeing, amenities and collaboration.

MPA completed this refurbishment across eight commercial levels, two basements and a conversion of the roof into a vibrant rooftop garden.

The completed project now includes a new hotel-like end-of-trip facility, the lobby area features a striking glass brick curved wall and charred timber panelling and the light-filled workspaces with their signature raw floors encourage creativity and collaboration. The basement car parks include bike storage and colourful mural art and the inspired rooftop with its multi-faceted green space has been a key drawcard to tenants.





ROOFTOP GARDEN

Aware of the correlation between mental health and access to green space, the owner conceived the rooftop as an urban escape to help support the wellbeing of their tenants. It can be used as an entertainment area, for meetings and even yoga and meditation.

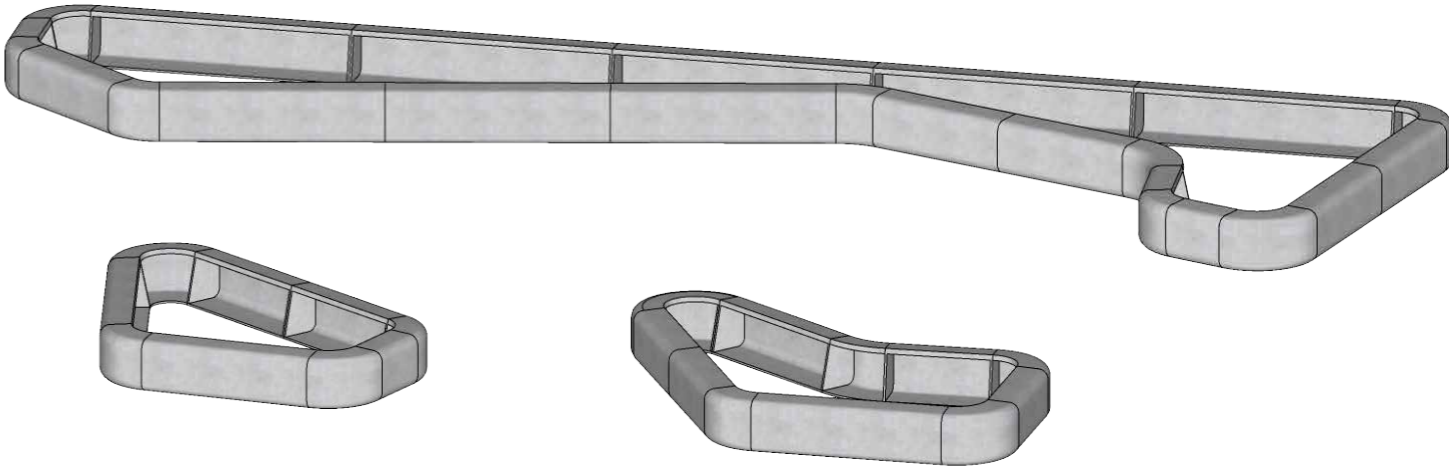
Inspired by The Word is Round's design theme and true to the owners vision for the rooftop, Arcadia designed and engineered the communal rooftop space to create a green oasis where tenants can re-energise their minds and connect with others.

Using ultra luxurious and contemporary finishes the space includes an outdoor kitchen and bar, a breeze-block feature acoustic wall, a range of seating amenities, an outdoor lounge and a yoga deck.

CUSTOM DESIGN & MANUFACTURE

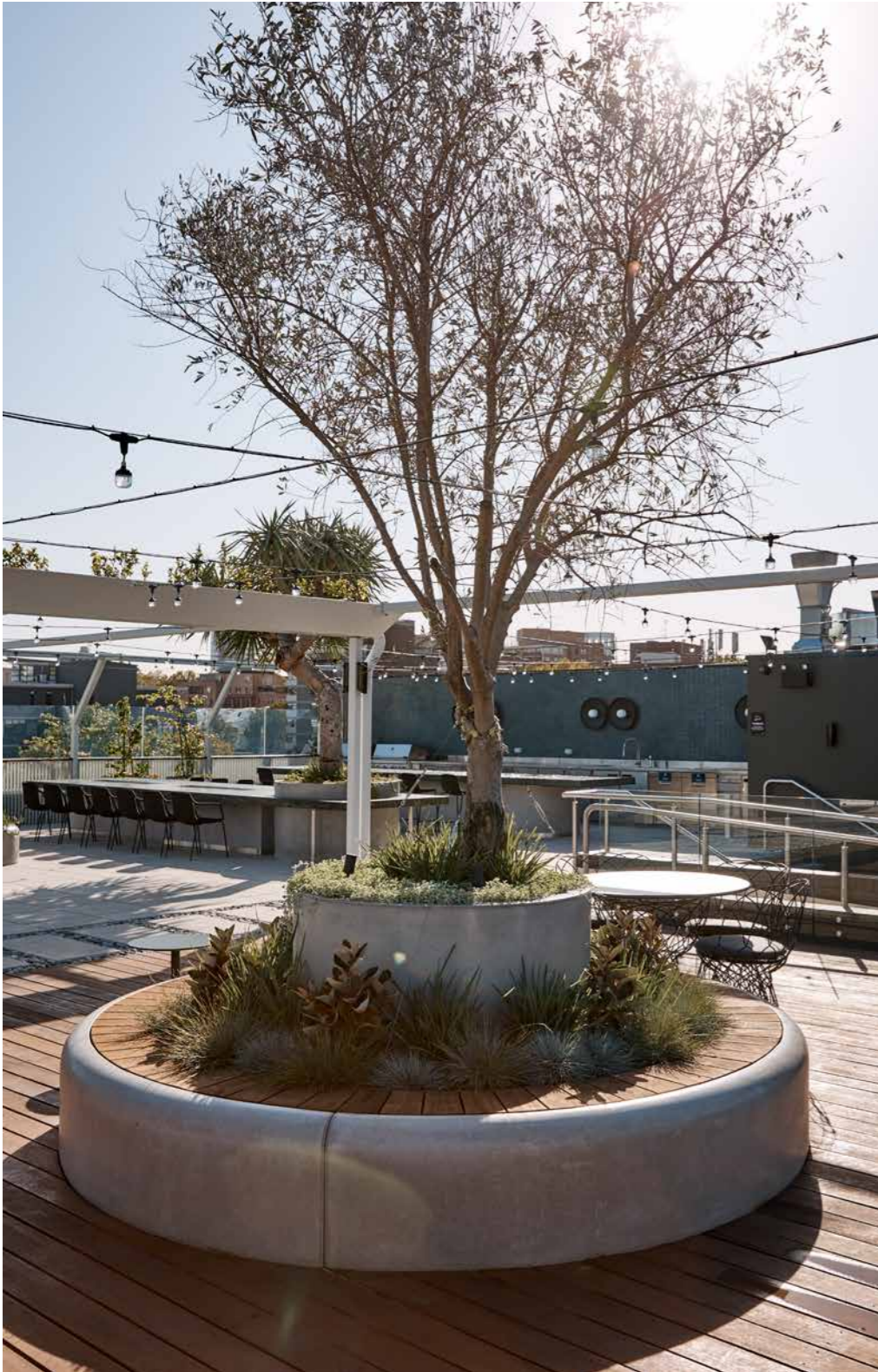
We manufactured the signature raised garden beds, a suite of bespoke tables and a custom seat planter for this spectacular rooftop garden. Our cylinder planters were used to provide additional internal height in the raised garden beds to showcase all feature trees. We were able to guide Arcadia and MPA’s design and estimating teams on the parameters of working with GRC (Glassfibre Reinforced Concrete) and mould-making, and could provide valuable guidelines and product drawings to resolve the final custom product designs.

RAISED GARDEN BEDS



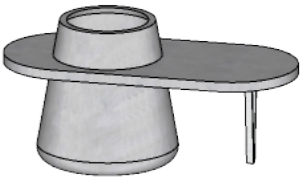
Inspired by the organic shape of the raised bed concepts we collaboratively designed a suite of modular segments that could be joined together to create the three raised garden beds. We provided valuable guidance on the final radiuses, the number of straight sections and internal strength to bring the design vision to life. Our aim was to keep all visible seam lines to a minimum to achieve a smooth, flowing and visually pleasing effect. The raised garden beds with our signature smooth surface finish can also be used as seating.

CUSTOM SEAT PLANTER

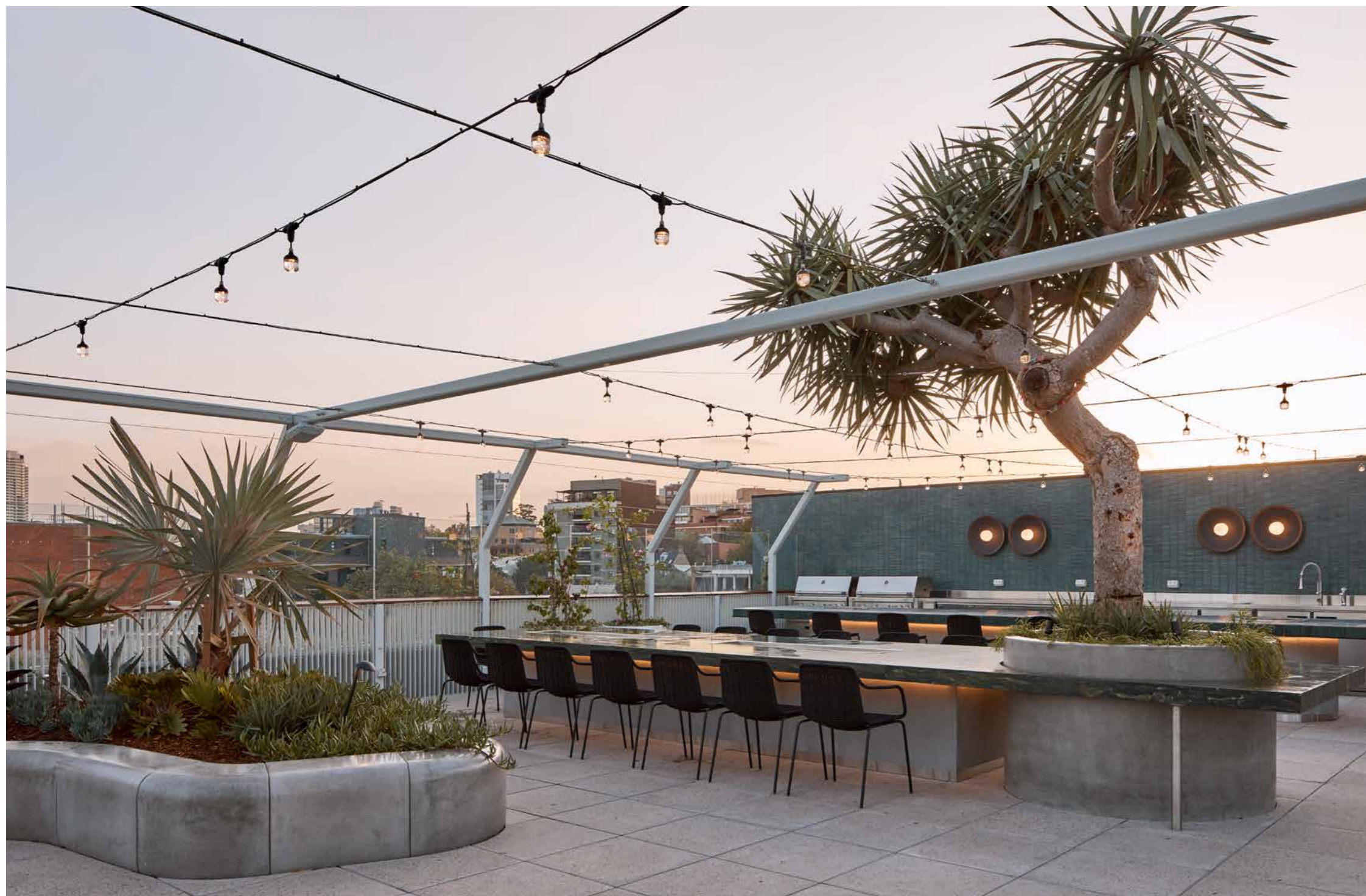


We manufactured this custom seat planter with its smooth, rounded edge and custom timber insert to suit the design specifications. Its open base allows for use as another raised garden bed and rooftop seating. One of our cylinder planters was used to provide additional internal height to showcase the large feature tree.

BESPOKE PLANTER TABLES



We created shop drawings to guide our mould-making and production departments, and through this process were able to provide valuable insights to the design and estimating teams on structural strength, table support legs and on-site assembly. The final product design created a seamless flow between the table top and planter to produce these iconic outdoor tables.



AWARD WINNER

MPA was awarded for their outstanding work on this project by the Master Builders Association of NSW.

They were the 2020 Winners in the Refurbishment / Renovation / Extension \$15 000 001 – \$20 000 000 category.

We extend our congratulations to the entire team. Their service and delivery excellence associated with every project they're partnered with has cemented their reputation as Australia's leading interior fitout and refurbishment company.

CREDITS

- Andrew Cliff, Director of The World is Round
- Michael Barnett, Sophie Randall, Ryan Morton and the team from Arcadia.
- Chris Jameson and the team from MPA.

Habitat House photography by Terence Chin.

2021 Quatro Design Pty Ltd. All rights reserved.

This document, including all of its contents any attachments, and including any photographs, diagrams, drawings or representations contained in this document, is the exclusive property of Quatro Design Pty Ltd. All information contained in this document is sensitive confidential information of Quatro Design Pty Ltd, any may also represent confidential and legally protected and enforceable industrial or intellectual property of Quatro Design Pty Ltd. No part of this document, including any photographs, diagrams, drawings or representations, may be reproduced, republished or otherwise disclosed or distributed without prior written consent of Quatro Design Pty Ltd. Document Reference: HH05/2021



WHERE LANDSCAPE MEETS ARCHITECTURE®

QUATRODESIGN.COM.AU